



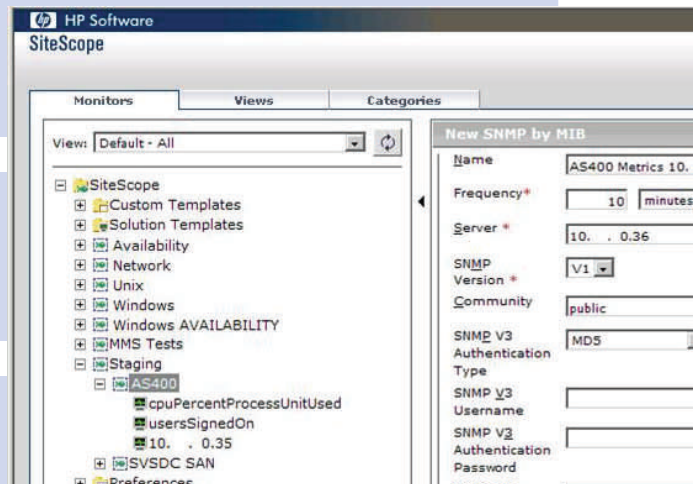
**COMTEK AS/400 — SiteScope Integration Data Sheet**

**Monitor IBM AS/400s with SiteScope**

**Your Network and Computers are Mission Critical.** Your business depends on its Networks and Servers. Not only are IP networks carrying core business transactions, they are increasingly being used to monitor the performance of remote servers. Without properly functioning servers, you may not be able to conduct business at all. Comtek /400 allows your SiteScope installation to monitor your IBM AS/400 and iSeries computers anywhere in the world!

**HP SiteScope Monitors Networks and Servers**

HP SiteScope is unmatched in monitoring the performance of critical Network and Server Infrastructure. SiteScope provides the information necessary to effectively manage your systems to avoid problems whenever possible. SiteScope reduces cost of ownership by consolidating maintenance and presenting all performance data at a central location.



```
Columns . . . . : 1 71          Edit
SEU==>
FMT **  ...+... 1 ...+... 2 ...+... 3 ...+... 4 ...+...
***** Beginning of data *****
0001.00 #
0002.00 # THIS IS AN EXAMPLE INITIAL CONFIGURATION FILE F
0003.00 # COPYRIGHT COMTEK SERVICES, INC. 1995-2006
0004.00 #
0005.00 # THE FOLLOWING LINE CONTAINS THE LICENSE KEY SUP
0006.00 LICENSE_KEY=YZ2IAJ5MTS71T2C9ZX
0007.00 #
0008.00 INITIAL_REQ_PS_FILENAME=COMTEK1/COMTEKCFG(CRIT_PR
0009.00 CMN_WAIT_TIME=600
0010.00 CONVERT_TO_ASCII=1
0011.00 CPU_WAIT_TIME=300
0012.00 # THE CPU TRAP THRESHOLD IS SPECIFIED IN TENTHS 0
0013.00 # THUS 95% WOULD BE SPECIFIED AS 950
```

**Monitor IBM AS/400 with SiteScope**

Now you can use SiteScope to Monitor your IBM AS/400s and iSeries machines. COMTEK NMServer 400 provides all of the information necessary to understand how your AS/400s are performing. Data such as Disk % full, CPU load, and Number of Jobs running are available to SiteScope in real time. AS/400 performance data provides the missing link in many SiteScope installations.

**COMTEK NMServer /400 Includes AS/400s in SiteScope**

COMTEK /400 is an application that resides on AS/400s. COMTEK /400 monitors important factors about the AS/400, and makes this information available when polled by SiteScope. In addition, COMTEK /400 sends alerts (called traps) when critical thresholds such as disk nearly full are exceeded.



## COMTEK NMServer/400 Features

### COMTEK /400 Monitors:

- Disks, CPU, Communications, Processes, Job Queue, Pools, ASP.

### QSYSOPR and Other Queues:

- COMTEK /400 can Filter and Selectively Forward QSYSOPR messages. Similarly, other queues may be monitored.

### Mission Critical Processes:

- COMTEK /400 sends alerts immediately if a Critical Process is missing or has failed.
- COMTEK /400 sends Alerts for: Critical Process Missing, CPU Overload, Disk Nearly Full, User Defined Alerts.

```
ADND003 Edit Configuration Files 5/29/09
COMTEK

Key X to Select  Config File
-              CRIT_PROCS  CRITICAL PROCESS Monitoring
-              DUMPTRAP   DISPLAY Recent Messages
-              INIT_CFG   INITIAL DISK, CPU, Other Threshold
-              Q_MON_CFG  MONITOR Generic Queues
-              SKIP_MSGID MONITOR QSYSOPR
-              SKIP_PGM   GENERIC Queue Filter

Enter X to Select and press return.
Press F3 to return to previous screen.

Bottom

F3=exit
```

### Complete Package

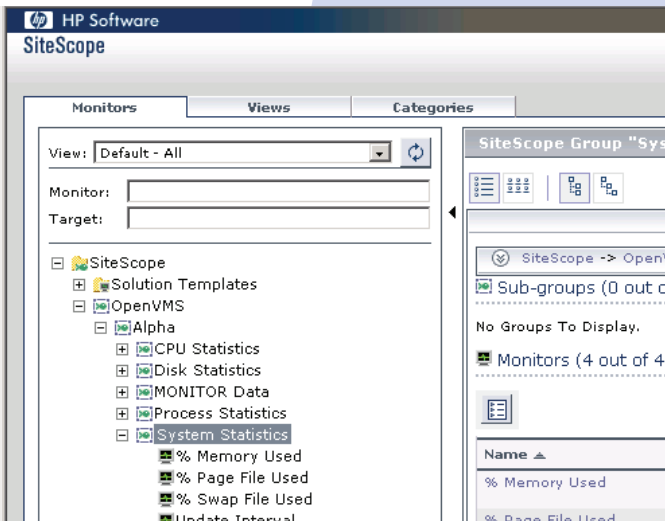
The COMTEK /400 package includes everything necessary to install and configure COMTEK /400 including the Installation Guide and MIB, User Guide, Sample Configuration Files, and Readme First document.

### COMTEK /400 Easy to Install on AS/400s

An administration tool is provided to assist in configuring COMTEK /400. ADMIN allows you to easily set up critical process monitoring, QSYSOPR and generic queue monitoring as well as thresholds for CPU and DISK traps.

### SiteScope Easy to Configure to monitor AS/400s

A complete Installation Guide for installing the COMTEK NMServer MIB in SiteScope is included. This Guide includes step-by-step instructions on how to include the necessary information in SiteScope to allow it to monitor your AS/400s.



© Copyright 2009 COMTEK Services, LLC. The information contained herein is subject to change without notice. Nothing herein should be construed as constituting an additional warranty. COMTEK shall not be liable for technical or editorial errors or omissions.

**COMTEK Services is a software company specializing in Remote Server Monitoring via SNMP.**

COMTEK has been providing SNMP products to the Telecom, Banking, Stock Exchange, Investment, Finance, Food and Pharmaceutical industries since 1998. COMTEK products are monitoring thousands of computers in Africa, Asia, Australia, Europe, and the Americas. COMTEK facilities are located in Texas, New Hampshire, North Carolina, and Virginia. Support is provided worldwide. NMServer, COMTEK, and COMTEK /400 are trademarks of COMTEK Services, LLC. IBM, HP, Mercury, Tivoli, SiteScope, AS/400, Compuware, OpenView, Vantage, IBM, OS/400, Orion, and iSeries may be trademarks of their respective companies.



**COMTEK Services, LLC • Phone: (603) 881-9556**  
**Nashua New Hampshire • Fax: (603) 881-5504**  
<http://www.COMTEKSERVICES.com>